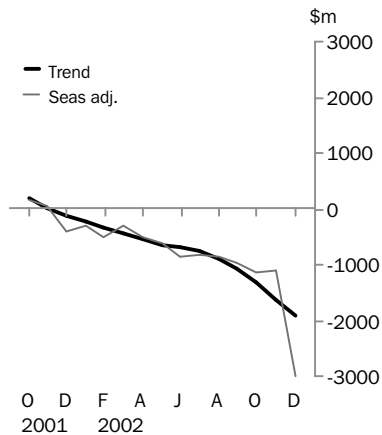


# INTERNATIONAL TRADE IN GOODS AND SERVICES

AUSTRALIA

EMBARGO: 11:30AM (CANBERRA TIME) FRI 31 JAN 2003

## Balance on goods and services



## DECEMBER KEY FIGURES

### TREND ESTIMATES

	Oct 2002 \$m	Nov 2002 \$m	Dec 2002 \$m	Nov 2002 to Dec 2002 % change
Balance on goods & services	-1 329	-1 626	-1 926	..
Credits (exports of goods & services)	12 594	12 595	12 601	0
Debits (imports of goods & services)	13 923	14 221	14 527	2

### SEASONALLY ADJUSTED

	Oct 2002 \$m	Nov 2002 \$m	Dec 2002 \$m	Nov 2002 to Dec 2002 % change
Balance on goods & services	-1 125	-1 106	-2 995	..
Credits (exports of goods & services)	12 668	12 686	12 484	-2
Debits (imports of goods & services)	13 793	13 792	15 479	12

## DECEMBER KEY POINTS

### TREND ESTIMATES

- The provisional trend estimate of the balance on goods and services was a deficit of \$1,926m in December, an increase of \$300m on the deficit in November.
- Goods and services credits rose \$6m to \$12,601m. Goods and services debits rose \$306m to \$14,527m.

### SEASONALLY ADJUSTED ESTIMATES

- In seasonally adjusted terms, the balance on goods and services was a deficit of \$2,995m in December, an increase of \$1,889m on the deficit in November. Of the increase, \$1.3b was due to imports of civil aircraft.
- Goods and services credits fell \$202m to \$12,484m. Rural goods fell by \$217m (10%) while non-rural and other goods fell \$26m. Services credits rose \$41m (2%).
- Goods and services debits rose \$1,687m (12%) to \$15,479m with goods debits up \$1,697m (15%) and services debits down \$10m. The increase in goods debits was driven by the rise in imports of capital goods, up \$1,379m (57%), and by intermediate and other goods, up \$328m (6%) in seasonally adjusted terms.

### ORIGINAL ESTIMATES

- In original terms, the 2002 calendar year deficit on goods and services was \$10,993m. The goods deficit was \$9,547m and the services deficit was \$1,446m.

- For further information about these and related statistics, please contact Tom Jebbink on Canberra (02) 6252 5540 or the National Information and Referral Service on 1300 135 070.

# NOTES

## FORTHCOMING ISSUES

<i>ISSUE</i>	<i>EXPECTED RELEASE DATE</i>
January 2003	4 March 2003
February 2003	1 April 2003
March 2003	2 May 2003
April 2003	29 May 2003
May 2003	30 June 2003
June 2003	29 July 2003

## CHANGES IN THIS ISSUE

In original terms, revisions since the previous issue have:

- increased the deficit on goods and services for September quarter 2002 by \$3m; and
- increased the deficit on goods and services for the five months to November 2002 by \$158m.

The revisions are the result of incorporating the latest available data relating to merchandise trade and the quarterly Survey of International Trade in Services.

## SYMBOLS AND OTHER USAGES

n.e.s.	not elsewhere specified
n.i.e.	not included elsewhere
n.p.	not published
..	not applicable

Dennis Trewin  
Australian Statistician

## ANALYSIS AND COMMENTS

### BALANCE ON GOODS AND SERVICES

The trend estimate of the balance on goods and services was a deficit of \$1,926m in December, an increase of \$300m on the deficit in November.

In seasonally adjusted terms, the balance on goods and services was a deficit of \$2,995m, an increase of \$1,889m on the deficit in November.

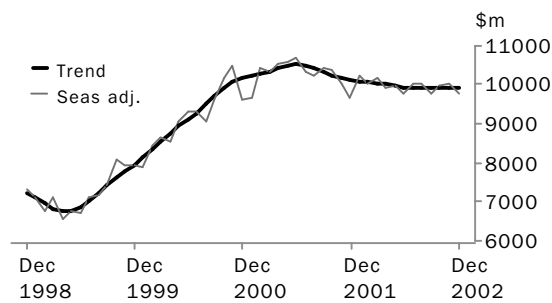
The sum of the seasonally adjusted balances for the three months to December 2002 is a deficit of \$5,226m, an increase of \$2,556m on the deficit of \$2,670m for the three months to September 2002. However, if the more detailed seasonal factors used in compiling quarterly Balance of Payments are applied, the December quarter 2002 deficit is \$5,489m, an increase of \$2,712m on the revised September quarter 2002 deficit of \$2,777m.

### EXPORTS OF GOODS AND SERVICES

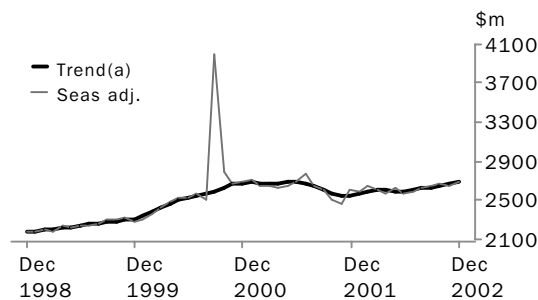
The trend estimate of goods and services credits rose \$6m in December to \$12,601m.

In seasonally adjusted terms, goods and services credits fell \$202m in December to \$12,484m. Rural goods fell by \$217m (10%) while non-rural and other goods fell by \$26m. Services credits increased by \$41m (2%).

#### GOODS CREDITS



#### SERVICES CREDITS



(a) Trend estimates exclude the impact of the Olympics in September and October 2000

**RURAL GOODS** The trend estimate of rural goods fell \$42m (2%) to \$2,186m. In seasonally adjusted terms, rural goods decreased \$217m (10%) to \$2,036m.

Rural goods, in original terms, decreased \$50 million (2%) to \$2,263m. The largest decreases were in:

- Cereal and cereal preparations, down \$58m (18%). Exports of wheat fell \$43m (17%) with volumes exported down 19% and prices up 3%; and
- Wool and sheepskins, down \$38m (9%). Exports of greasy wool decreased \$40m (14%) with volumes exported down 15% and prices up 2%.

Partly offsetting these decreases were increases in other rural goods exports, up \$46m (4%) largely due to increased shipments of cotton, up 17%, and fish, crustaceans and molluscs, up \$49m (48%), reflecting the seasonal rock lobster harvest.

## ANALYSIS AND COMMENTS

**NON-RURAL AND OTHER GOODS** The trend estimate of non-rural and other goods exports rose \$34m to \$7,733m. Seasonally adjusted, non-rural and other goods fell \$26m to \$7,759m.

In original terms, non-rural and other goods increased \$481m (6%) to \$8,255m. The increase was largely driven by:

- Metal ores and minerals, up \$168m (15%). Exports of metalliferous ores and metal scrap rose \$152m (14%) due largely to increases in volumes shipped;
- Coal, coke and briquettes, up \$97m (10%) with increased volumes exported due to high demand and vessel availability. Semi-soft coking coal increased \$53m (35%), hard coking coal rose \$33m (7%) and bituminous coal rose \$15m (4%); and
- Other non-rural, up \$87m (14%). The most significant increases occurred in beverages, up \$55m (29%), with red and white table wines exports up 9%.

Partially offsetting these increases were decreases in exports of :

- Other manufactures, down \$39m (3%); and
- Transport equipment, down \$36m (5%). This decrease was driven by road vehicles, down \$29m (6%), as exports of large motor vehicles fell \$60m after a strong result in November.

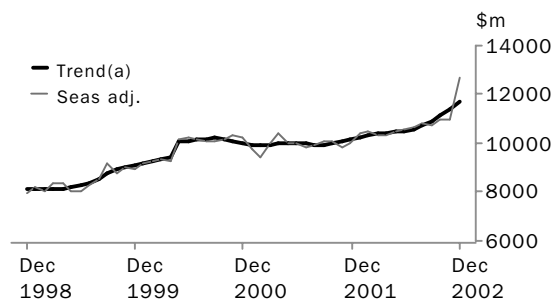
### IMPORTS OF GOODS AND SERVICES

The trend estimate of goods and services debits rose \$306m to \$14,527m.

In seasonally adjusted terms, goods and services debits rose \$1,687m (12%) to \$15,479m. Goods debits rose \$1,697m (15%) to \$12,681m, while services debits fell \$10m to \$2,798m.

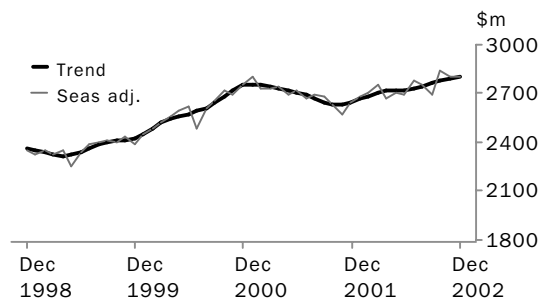
Preliminary analysis shows that goods import volumes, in seasonally adjusted terms, increased about 7.8% during the December quarter 2002. The Chain Laspeyres price index and the implicit price deflator both fell by about 0.1%. The final volume and price outcomes will be published in the December quarter 2002 issue of *Balance of Payments and International Investment Position, Australia* (5302.0).

#### GOODS DEBITS



(a) A trend break of \$500m has been applied to May 2000

#### SERVICES DEBITS



## ANALYSIS AND COMMENTS

**CONSUMPTION GOODS** The trend estimate of imports of consumption goods increased \$26m to \$3,481m. In seasonally adjusted terms, imports of consumption goods fell \$10m to \$3,483m.

Consumption goods, in original terms, fell \$400m (11%) to \$3,324m. There were decreases in five of the six components, with significant falls in:

- consumption goods n.e.s., down \$196m (17%), mainly due to decreased imports of medicaments, down \$77m (22%);
- toys, books, and leisure goods, down \$140m (33%), with other toys and leisure goods, down \$47m (47%), and sound recorded media, down \$37m (41%); and
- household electrical items, down \$83m (22%), with television receivers, down \$26m (27%), and video recording apparatus, down \$12m (21%).

Partly offsetting these decreases was a rise in imports of non-industrial transport equipment, up \$77m (9%), due to an increase in the number of motor vehicles imported, with off-road vehicles up \$43m, and medium sized passenger cars up \$30m.

**CAPITAL GOODS** The trend estimate of imports of capital goods rose \$192m to \$3,027m. Seasonally adjusted, capital goods imports increased \$1,379m (57%) to \$3,796m.

Imports of capital goods, in original terms, rose \$1,177m (48%) to \$3,609m. Increases occurred in three out of the six categories:

- civil aircraft, up \$1,204m;
- ADP equipment, up \$46m (13%); and
- telecommunications equipment, up \$27m (8%).

These increases were partly offset by decreases in imports of machinery and industrial equipment, down \$56m (5%), mainly due to decreased imports of metal working machinery, down \$46m (53%).

**INTERMEDIATE AND OTHER GOODS** The trend estimate of imports of intermediate and other goods increased \$76m to \$5,211m. Seasonally adjusted, intermediate and other goods imports rose \$328m (6%) to \$5,402m.

Imports of intermediate and other goods, in original terms, decreased \$10m to \$5,216m. The major contributors to this decrease were:

- processed industrial supplies n.e.s., down \$91m (9%);
- other merchandise goods, down \$73m (31%), largely due to decreased imports of military equipment, down \$68m (49%); and
- parts for transport equipment, down \$39m (6%), due to decreased imports of parts and accessories for motor cars, down \$35m (17%).

Largely offsetting these decreases were rises in imports of fuels and lubricants, up \$119m (15%), driven by increases in crude petroleum, up \$94m (15%); and organic and inorganic chemicals, up \$54m (26%).

GOODS AND SERVICES(a), Summary: **Seasonally Adjusted and Trend**

CREDITS..... DEBITS.....

Months	Balance on goods and services \$m	Total goods and services \$m	Total goods \$m	Rural goods(b) \$m	Non-rural and other goods(b) \$m	Total services \$m	Total goods and services \$m	Total goods \$m	Con- sumption goods \$m	Capital goods \$m	Inter- mediate and other goods \$m	Total services \$m
<b>SEASONALLY ADJUSTED</b>												
<b>2001</b>												
October	166	12 913	10 397	2 637	7 760	2 516	-12 747	-10 116	-3 105	-2 198	-4 813	-2 631
November	41	12 484	10 016	2 503	7 513	2 468	-12 443	-9 870	-3 109	-2 223	-4 538	-2 573
December	-386	12 251	9 650	2 146	7 504	2 601	-12 637	-9 992	-2 933	-2 270	-4 789	-2 645
<b>2002</b>												
January	-292	12 828	10 234	2 379	7 855	2 594	-13 120	-10 442	-3 191	-2 330	-4 921	-2 678
February	-495	12 682	10 037	2 458	7 579	2 645	-13 177	-10 465	-3 278	-2 353	-4 834	-2 712
March	-313	12 776	10 174	2 407	7 767	2 602	-13 089	-10 330	-3 183	-2 223	-4 924	-2 759
April	-492	12 489	9 913	2 361	7 552	2 576	-12 981	-10 315	-3 257	-2 300	-4 758	-2 666
May	-604	12 631	10 001	2 468	7 533	2 630	-13 235	-10 530	-3 297	-2 527	-4 706	-2 705
June	-863	12 369	9 793	2 351	7 442	2 576	-13 232	-10 535	-3 295	-2 411	-4 829	-2 697
July	-826	12 601	10 019	2 327	7 692	2 582	-13 427	-10 651	-3 293	-2 581	-4 777	-2 776
August	-868	12 676	10 037	2 391	7 646	2 639	-13 544	-10 787	-3 340	-2 393	-5 054	-2 757
September	-976	12 434	9 790	2 252	7 538	2 644	-13 410	-10 722	-3 465	-2 408	-4 849	-2 688
October	-1 125	12 668	9 993	2 401	7 592	2 675	-13 793	-10 957	-3 359	-2 579	-5 019	-2 836
November	-1 106	12 686	10 038	2 253	7 785	2 648	-13 792	-10 984	-3 493	-2 417	-5 074	-2 808
December	-2 995	12 484	9 795	2 036	7 759	2 689	-15 479	-12 681	-3 483	-3 796	-5 402	-2 798

## TREND ESTIMATES

<b>2001</b>												
October	176	12 811	10 240	2 587	7 653	2 571	-12 635	-9 997	-3 042	-2 214	-4 741	-2 638
November	19	12 732	10 178	2 537	7 641	2 554	-12 713	-10 075	-3 070	-2 247	-4 758	-2 638
December	-113	12 693	10 134	2 485	7 649	2 559	-12 806	-10 157	-3 104	-2 269	-4 784	-2 649
<b>2002</b>												
January	-230	12 678	10 100	2 444	7 656	2 578	-12 908	-10 240	-3 144	-2 284	-4 812	-2 668
February	-341	12 660	10 062	2 417	7 645	2 598	-13 001	-10 314	-3 186	-2 304	-4 824	-2 687
March	-446	12 641	10 034	2 406	7 628	2 607	-13 087	-10 383	-3 224	-2 335	-4 824	-2 704
April	-542	12 612	10 007	2 399	7 608	2 605	-13 154	-10 441	-3 256	-2 372	-4 813	-2 713
May	-637	12 571	9 971	2 390	7 581	2 600	-13 208	-10 492	-3 280	-2 410	-4 802	-2 716
June	-701	12 541	9 942	2 381	7 561	2 599	-13 242	-10 522	-3 301	-2 419	-4 802	-2 720
July	-770	12 543	9 935	2 369	7 566	2 608	-13 313	-10 582	-3 325	-2 423	-4 834	-2 731
August	-890	12 562	9 939	2 347	7 592	2 623	-13 452	-10 705	-3 358	-2 454	-4 893	-2 747
September	-1 076	12 583	9 943	2 316	7 627	2 640	-13 659	-10 893	-3 392	-2 532	-4 969	-2 766
October	-1 329	12 594	9 939	2 275	7 664	2 655	-13 923	-11 141	-3 425	-2 665	-5 051	-2 782
November	-1 626	12 595	9 927	2 228	7 699	2 668	-14 221	-11 425	-3 455	-2 835	-5 135	-2 796
December	-1 926	12 601	9 919	2 186	7 733	2 682	-14 527	-11 719	-3 481	-3 027	-5 211	-2 808

(a) For sign conventions, see paragraph 8 of the Explanatory notes.

(b) For all time periods, estimates for Sugar, sugar preparations and honey are included in Other non-rural

GOODS AND SERVICES(a), Summary: **Original**

Period	CREDITS.....						DEBITS.....					
	Balance on goods and services	Total goods and services	Total goods	Rural goods(b)	Non-rural and other goods(b)	Total services	Total goods and services	Total goods	Con-sumption goods	Capital goods	Inter-mediate and other goods	Total services
	\$m	\$m	\$m	\$m	\$m	\$m	\$m	\$m	\$m	\$m	\$m	\$m
<b>1999-2000</b>	-14 289	126 034	97 665	23 617	74 048	28 369	-140 323	-110 610	-30 781	-26 695	-53 134	-29 713
<b>2000-2001</b>	875	153 511	120 307	29 061	91 246	33 204	-152 636	-120 337	-35 775	-25 552	-59 010	-32 299
<b>2001-2002</b>	-1 581	152 357	121 157	29 593	91 564	31 200	-153 938	-121 882	-37 422	-27 148	-57 312	-32 056
<b>2001</b>												
October	-1 222	13 306	10 835	2 691	8 144	2 471	-14 528	-11 703	-3 749	-2 476	-5 478	-2 825
November	-697	12 439	10 057	2 555	7 502	2 382	-13 136	-10 607	-3 427	-2 336	-4 844	-2 529
December	920	12 813	10 217	2 341	7 876	2 596	-11 893	-9 284	-2 754	-2 132	-4 398	-2 609
<b>2002</b>												
January	-727	11 789	8 897	2 155	6 742	2 892	-12 516	-9 802	-2 801	-2 232	-4 769	-2 714
February	563	12 446	9 293	2 394	6 899	3 153	-11 883	-9 510	-3 057	-1 970	-4 483	-2 373
March	773	13 046	10 510	2 553	7 957	2 536	-12 273	-9 709	-2 900	-2 080	-4 729	-2 564
April	-703	12 182	9 738	2 305	7 433	2 444	-12 885	-10 248	-3 172	-2 180	-4 896	-2 637
May	-968	12 450	10 096	2 562	7 534	2 354	-13 418	-10 776	-3 087	-2 779	-4 910	-2 642
June	-411	12 147	9 758	2 242	7 516	2 389	-12 558	-9 838	-2 902	-2 436	-4 500	-2 720
July	-1 078	13 156	10 218	2 262	7 956	2 938	-14 234	-11 285	-3 674	-2 777	-4 834	-2 949
August	-1 176	12 795	10 314	2 375	7 939	2 481	-13 971	-11 165	-3 602	-2 428	-5 135	-2 806
September	-1 703	12 250	9 900	2 166	7 734	2 350	-13 953	-11 007	-3 702	-2 483	-4 822	-2 946
October	-2 403	13 090	10 474	2 473	8 001	2 616	-15 493	-12 479	-3 994	-2 836	-5 649	-3 014
November	-1 434	12 675	10 087	2 313	7 774	2 588	-14 109	-11 382	-3 724	-2 432	-5 226	-2 727
December	-1 726	13 187	10 518	2 263	8 255	2 669	-14 913	-12 149	-3 324	-3 609	-5 216	-2 764
FINANCIAL YEAR TO DATE												
6 months to Dec 2001	-108	78 297	62 865	15 382	47 483	15 432	-78 405	-61 999	-19 503	-13 471	-29 025	-16 406
6 months to Dec 2002	-9 520	77 153	61 511	13 852	47 659	15 642	-86 673	-69 467	-22 020	-16 565	-30 882	-17 206

(a) For sign conventions, see paragraph 8 of the Explanatory notes.

(b) For all time periods, estimates for Sugar, sugar preparations and honey are included in Other non-rural

## GOODS CREDITS: Original

## RURAL GOODS.....

<i>Period</i>	<i>Total goods</i>	<i>Total rural goods(a)</i>	<i>Meat and meat preparations</i>	<i>Cereal grains and cereal preparations</i>	<i>Sugar, sugar preparations and honey(a)</i>	<i>Wool and sheepskins</i>	<i>Other rural</i>
<i>\$m</i>	<i>\$m</i>	<i>\$m</i>	<i>\$m</i>	<i>\$m</i>	<i>\$m</i>	<i>\$m</i>	<i>\$m</i>
<b>1999-2000</b>	97 665	23 617	4 467	4 941	n.p.	2 963	11 246
<b>2000-2001</b>	120 307	29 061	5 796	5 834	n.p.	3 897	13 534
<b>2001-2002</b>	121 157	29 593	6 246	5 993	n.p.	3 687	13 667
<b>2001</b>							
October	10 835	2 691	617	498	n.p.	365	1 211
November	10 057	2 555	516	546	n.p.	328	1 165
December	10 217	2 341	504	445	n.p.	278	1 114
<b>2002</b>							
January	8 897	2 155	298	666	n.p.	176	1 015
February	9 293	2 394	450	523	n.p.	313	1 108
March	10 510	2 553	562	431	n.p.	421	1 139
April	9 738	2 305	495	503	n.p.	291	1 016
May	10 096	2 562	550	439	n.p.	322	1 251
June	9 758	2 242	512	409	n.p.	274	1 047
July	10 218	2 262	494	361	n.p.	307	1 100
August	10 314	2 375	483	453	n.p.	267	1 172
September	9 900	2 166	468	382	n.p.	304	1 012
October	10 474	2 473	570	390	n.p.	423	1 090
November	10 087	2 313	528	328	n.p.	419	1 038
December	10 518	2 263	528	270	n.p.	381	1 084
FINANCIAL YEAR TO DATE							
6 months to Dec 2001	62 865	15 382	3 379	3 022	n.p.	1 890	7 091
6 months to Dec 2002	61 511	13 852	3 071	2 184	n.p.	2 101	6 496

(a) For all time periods, estimates for Sugar, sugar preparations and honey are included in Other non-rural



GOODS CREDITS: *Original* continued

## NON-RURAL GOODS.....

<i>Period</i>	<i>Total non-rural goods(a)</i>	<i>Metal ores and minerals</i>	<i>Coal, coke and briquettes</i>	<i>Other mineral fuels</i>	<i>Metals (excl. gold)</i>	<i>Machinery</i>	<i>Transport equipment</i>	<i>Other manufactures</i>	<i>Other non-rural(a)</i>	<i>Other goods(b)</i>
	<i>\$m</i>	<i>\$m</i>	<i>\$m</i>	<i>\$m</i>	<i>\$m</i>	<i>\$m</i>	<i>\$m</i>	<i>\$m</i>	<i>\$m</i>	<i>\$m</i>
<b>1999-2000</b>	66 493	11 760	8 336	9 082	8 810	7 133	4 597	11 539	5 236	7 555
<b>2000-2001</b>	83 836	15 205	10 844	13 464	10 146	8 797	5 041	13 530	6 809	7 410
<b>2001-2002</b>	83 945	14 774	13 430	10 940	9 650	7 999	5 756	13 758	7 638	7 619
<b>2001</b>										
October	7 467	1 351	1 165	917	830	700	614	1 165	725	677
November	6 823	1 124	1 026	930	812	735	415	1 219	562	679
December	7 370	1 385	1 121	875	724	892	567	1 148	658	506
<b>2002</b>										
January	6 019	1 034	1 246	879	810	470	205	881	494	723
February	6 336	1 143	1 080	765	757	575	430	1 118	468	563
March	7 312	1 137	1 159	805	893	682	742	1 247	647	645
April	6 838	1 284	1 086	855	756	590	492	1 080	695	595
May	6 768	1 152	1 027	856	805	684	402	1 146	696	766
June	6 902	1 260	1 051	872	698	622	593	1 137	669	614
July	7 205	1 185	1 006	1 014	811	666	536	1 177	810	751
August	7 298	1 212	1 091	1 077	800	641	554	1 129	794	641
September	7 211	1 264	1 020	1 047	726	648	461	1 213	832	523
October	7 179	1 224	972	908	791	630	657	1 188	809	822
November	7 119	1 158	1 017	974	770	639	743	1 197	621	655
December	7 531	1 326	1 114	988	827	703	707	1 158	708	724
FINANCIAL YEAR TO DATE										
6 months to Dec 2001	43 770	7 764	6 781	5 908	4 931	4 376	2 892	7 149	3 969	3 713
6 months to Dec 2002	43 543	7 369	6 220	6 008	4 725	3 927	3 658	7 062	4 574	4 116

(a) For all time periods, estimates for Sugar, sugar preparations and honey are included in Other non-rural

(b) Includes non-monetary gold.

## GOODS DEBITS(a): Original

## CONSUMPTION GOODS.....

<i>Period</i>	<i>Total goods</i>	<i>Total consumption goods</i>	<i>Food and beverages, mainly for consumption</i>	<i>Household electrical items</i>	<i>Non-industrial transport equipment</i>	<i>Textiles, clothing and footwear</i>	<i>Toys, books and leisure goods</i>	<i>Consumption goods n.e.s.</i>
	<i>\$m</i>	<i>\$m</i>	<i>\$m</i>	<i>\$m</i>	<i>\$m</i>	<i>\$m</i>	<i>\$m</i>	<i>\$m</i>
<b>1999-2000</b>	-110 610	-30 781	-3 943	-2 456	-7 735	-4 232	-3 238	-9 177
<b>2000-2001</b>	-120 337	-35 775	-4 483	-3 000	-9 627	-4 811	-3 359	-10 495
<b>2001-2002</b>	-121 882	-37 422	-4 687	-3 166	-9 930	-4 849	-3 494	-11 296
<b>2001</b>								
October	-11 703	-3 749	- 507	- 348	- 898	- 420	- 395	-1 181
November	-10 607	-3 427	- 460	- 338	- 903	- 388	- 320	-1 018
December	-9 284	-2 754	- 386	- 217	- 821	- 309	- 218	- 803
<b>2002</b>								
January	-9 802	-2 801	- 406	- 186	- 696	- 440	- 234	- 839
February	-9 510	-3 057	- 376	- 238	- 685	- 528	- 272	- 958
March	-9 709	-2 900	- 365	- 238	- 861	- 371	- 231	- 834
April	-10 248	-3 172	- 360	- 286	- 820	- 393	- 280	-1 033
May	-10 776	-3 087	- 358	- 286	- 908	- 338	- 275	- 922
June	-9 838	-2 902	- 317	- 259	- 905	- 318	- 285	- 818
July	-11 285	-3 674	- 382	- 314	-1 095	- 477	- 327	-1 079
August	-11 165	-3 602	- 409	- 330	- 893	- 526	- 356	-1 088
September	-11 007	-3 702	- 419	- 350	-1 001	- 438	- 360	-1 134
October	-12 479	-3 994	- 486	- 413	- 918	- 495	- 463	-1 219
November	-11 382	-3 724	- 469	- 370	- 896	- 427	- 421	-1 141
December	-12 149	-3 324	- 465	- 287	- 973	- 373	- 281	- 945
FINANCIAL YEAR TO DATE								
6 months to Dec 2001	-61 999	-19 503	-2 505	-1 673	-5 055	-2 461	-1 917	-5 892
6 months to Dec 2002	-69 467	-22 020	-2 630	-2 064	-5 776	-2 736	-2 208	-6 606

(a) For sign conventions, see paragraph 8 of the Explanatory Notes.

GOODS DEBITS(a): **Original** *continued*

## CAPITAL GOODS.....

<i>Period</i>	<i>Total capital goods</i>	<i>Machinery and industrial equipment</i>	<i>ADP equipment</i>	<i>Telecommunications equipment</i>	<i>Civil aircraft</i>	<i>Industrial transport equipment n.e.s.</i>	<i>Capital goods n.e.s.</i>
<i>\$m</i>	<i>\$m</i>	<i>\$m</i>	<i>\$m</i>	<i>\$m</i>	<i>\$m</i>	<i>\$m</i>	<i>\$m</i>
<b>1999-2000</b>	-26 695	-8 912	-4 912	-4 150	-1 414	-3 981	-3 326
<b>2000-2001</b>	-25 552	-8 876	-5 260	-4 379	- 609	-2 753	-3 675
<b>2001-2002</b>	-27 148	-9 502	-5 055	-3 643	-1 513	-3 553	-3 882
<b>2001</b>							
October	-2 476	- 976	- 422	- 343	-14	- 367	- 354
November	-2 336	- 874	- 436	- 366	-34	- 289	- 337
December	-2 132	- 773	- 477	- 305	-46	- 228	- 303
<b>2002</b>							
January	-2 232	- 827	- 378	- 163	- 354	- 233	- 277
February	-1 970	- 654	- 373	- 171	- 234	- 249	- 289
March	-2 080	- 713	- 457	- 231	- 133	- 239	- 307
April	-2 180	- 734	- 473	- 228	- 110	- 287	- 348
May	-2 779	- 779	- 436	- 358	- 231	- 627	- 348
June	-2 436	- 719	- 444	- 333	- 326	- 294	- 320
July	-2 777	- 914	- 451	- 271	- 473	- 298	- 370
August	-2 428	-1 089	- 393	- 265	0	- 301	- 380
September	-2 483	- 894	- 420	- 258	- 189	- 338	- 384
October	-2 836	-1 004	- 428	- 324	- 368	- 313	- 399
November	-2 432	-1 032	- 360	- 323	-30	- 314	- 373
December	-3 609	- 976	- 406	- 350	-1 234	- 288	- 355
FINANCIAL YEAR TO DATE							
6 months to Dec 2001	-13 471	-5 076	-2 494	-2 159	- 125	-1 624	-1 993
6 months to Dec 2002	-16 565	-5 909	-2 458	-1 791	-2 294	-1 852	-2 261

(a) For sign conventions, see paragraph 8 of the Explanatory Notes.

GOODS DEBITS(a): **Original** *continued*INTERMEDIATE AND OTHER MERCHANDISE  
GOODS.....

<i>Period</i>	<i>Total intermediate and other merchandise goods</i>	<i>Food and beverages, mainly for industry</i>	<i>Primary industrial supplies n.e.s.</i>	<i>Fuels and lubricants</i>	<i>Parts for transport equipment</i>	<i>Parts for ADP equipment</i>	<i>Other parts for capital goods</i>	<i>Organic and inorganic chemicals</i>
	\$m	\$m	\$m	\$m	\$m	\$m	\$m	\$m
<b>1999-2000</b>	-49 073	- 731	-1 117	-7 450	-6 874	-1 936	-8 008	-3 572
<b>2000-2001</b>	-54 652	- 592	-1 133	-10 358	-7 089	-2 255	-9 072	-3 777
<b>2001-2002</b>	-52 172	- 577	-1 117	-8 823	-6 827	-2 159	-8 216	-3 447
<b>2001</b>								
October	-4 957	-46	- 115	- 885	- 694	- 186	- 781	- 289
November	-4 456	-53	- 101	- 650	- 550	- 190	- 712	- 281
December	-3 953	-39	-76	- 690	- 522	- 191	- 631	- 285
<b>2002</b>								
January	-4 419	-56	- 100	- 618	- 550	- 177	- 663	- 369
February	-4 028	-51	-73	- 688	- 547	- 161	- 619	- 252
March	-4 314	-50	- 107	- 703	- 538	- 193	- 650	- 289
April	-4 398	-48	- 106	- 648	- 564	- 183	- 691	- 277
May	-4 551	-50	-96	- 800	- 581	- 172	- 715	- 283
June	-4 015	-47	-85	- 671	- 553	- 185	- 666	- 212
July	-4 407	-62	- 104	- 697	- 621	- 199	- 717	- 287
August	-4 755	-63	- 128	- 847	- 630	- 178	- 721	- 237
September	-4 426	-61	- 129	- 629	- 599	- 159	- 718	- 238
October	-5 065	-55	- 106	-1 003	- 679	- 172	- 763	- 253
November	-4 771	-52	- 109	- 817	- 668	- 177	- 733	- 207
December	-4 690	-63	-99	- 936	- 629	- 165	- 721	- 261

## FINANCIAL YEAR TO DATE

6 months to Dec 2001	-26 447	- 275	- 550	-4 695	-3 494	-1 088	-4 212	-1 765
6 months to Dec 2002	-28 114	- 356	- 675	-4 929	-3 826	-1 050	-4 373	-1 483

(a) For sign conventions, see paragraph 8 of the Explanatory Notes.

GOODS DEBITS(a): **Original** *continued*INTERMEDIATE AND OTHER MERCHANDISE GOODS *continued*.....

Period	Paper and paperboard	Textile yarn and fabrics	Iron and steel	Plastics	Processed industrial supplies n.e.s.	Other merchandise goods	Other goods(b)
	\$m	\$m	\$m	\$m	\$m	\$m	\$m
<b>1999-2000</b>	-2 207	-1 987	-1 509	-2 037	-10 772	- 873	-4 061
<b>2000-2001</b>	-2 311	-1 863	-1 437	-2 193	-11 252	-1 320	-4 358
<b>2001-2002</b>	-2 225	-1 830	-1 765	-2 182	-11 441	-1 563	-5 140
<b>2001</b>							
October	- 221	- 164	- 172	- 204	-1 036	- 164	- 521
November	- 206	- 160	- 163	- 208	-1 089	- 93	- 388
December	- 156	- 117	- 116	- 155	- 853	- 122	- 445
<b>2002</b>							
January	- 181	- 151	- 176	- 194	-1 017	- 167	- 350
February	- 178	- 142	- 125	- 157	- 913	- 122	- 455
March	- 187	- 133	- 154	- 176	- 959	- 175	- 415
April	- 189	- 155	- 146	- 183	-1 066	- 142	- 498
May	- 182	- 172	- 148	- 194	-1 023	- 135	- 359
June	- 158	- 152	- 141	- 168	- 795	- 182	- 485
July	- 184	- 182	- 135	- 196	- 936	- 87	- 427
August	- 205	- 169	- 164	- 205	- 992	- 216	- 380
September	- 199	- 160	- 158	- 204	-1 031	- 141	- 396
October	- 236	- 171	- 170	- 227	-1 037	- 193	- 584
November	- 203	- 159	- 147	- 217	-1 043	- 239	- 455
December	- 176	- 137	- 178	- 207	- 952	- 166	- 526
FINANCIAL YEAR TO DATE							
6 months to Dec 2001	-1 150	- 925	- 875	-1 110	-5 668	- 640	-2 578
6 months to Dec 2002	-1 203	- 978	- 952	-1 256	-5 991	-1 042	-2 768

(a) For sign conventions, see paragraph 8 of the Explanatory Notes. (b) Includes non-monetary gold.

## SERVICES(a)(b): Original

Period	CREDITS.....					DEBITS.....				
	Total services	Freight	Other transportation	Travel	Other services	Total services	Freight	Other transportation	Travel	Other services
	\$m	\$m	\$m	\$m	\$m	\$m	\$m	\$m	\$m	\$m
<b>1999-2000</b>	28 369	1 017	5 848	13 139	8 365	-29 713	-5 257	-4 761	-9 836	-9 859
<b>2000-2001</b>	33 204	1 038	7 024	15 366	9 776	-32 299	-5 991	-5 361	-11 189	-9 758
<b>2001-2002</b>	31 200	1 001	6 664	14 775	8 760	-32 056	-5 626	-5 150	-10 934	-10 346
<b>2001</b>										
October	2 471	93	536	1 079	763	-2 825	- 554	- 397	- 971	- 903
November	2 382	93	519	993	777	-2 529	- 512	- 360	- 754	- 903
December	2 596	92	560	1 181	763	-2 609	- 422	- 434	- 820	- 933
<b>2002</b>										
January	2 892	77	577	1 529	709	-2 714	- 449	- 407	-1 041	- 817
February	3 153	77	571	1 803	702	-2 373	- 430	- 361	- 743	- 839
March	2 536	76	591	1 183	686	-2 564	- 466	- 413	- 864	- 821
April	2 444	80	526	1 097	741	-2 637	- 468	- 422	- 885	- 862
May	2 354	80	526	997	751	-2 642	- 472	- 445	- 860	- 865
June	2 389	81	522	1 034	752	-2 720	- 402	- 491	- 931	- 896
July	2 938	81	560	1 581	716	-2 949	- 464	- 551	-1 066	- 868
August	2 481	81	560	1 113	727	-2 806	- 499	- 476	- 951	- 880
September	2 350	81	559	979	731	-2 946	- 474	- 511	-1 070	- 891
October	2 616	82	589	1 188	757	-3 014	- 515	- 499	-1 079	- 921
November	2 588	82	589	1 153	764	-2 727	- 492	- 434	- 876	- 925
December	2 669	82	589	1 239	759	-2 764	- 478	- 488	- 868	- 930
FINANCIAL YEAR TO DATE										
6 months to Dec 2001	15 432	530	3 351	7 132	4 419	-16 406	-2 939	-2 611	-5 610	-5 246
6 months to Dec 2002	15 642	489	3 446	7 253	4 454	-17 206	-2 922	-2 959	-5 910	-5 415

(a) For sign conventions, see paragraph 8 of the Explanatory Notes.

(b) For more detailed trade in services by commodity, see Table 6.

## SERVICES(a)(b): Original—Quarterly

	CREDITS.....				DEBITS.....			
	<i>Mar Qtr</i>	<i>Jun Qtr</i>	<i>Sep Qtr</i>	<i>Dec Qtr</i>	<i>Mar Qtr</i>	<i>Jun Qtr</i>	<i>Sep Qtr</i>	<i>Dec Qtr</i>
	2002	2002	2002	2002	2002	2002	2002	2002
	\$m	\$m	\$m	\$m	\$m	\$m	\$m	\$m
<b>SERVICES</b>	<b>8 581</b>	<b>7 187</b>	<b>7 769</b>	<b>7 873</b>	<b>-7 651</b>	<b>-7 999</b>	<b>-8 701</b>	<b>-8 505</b>
<b>Transportation services</b>	<b>1 969</b>	<b>1 815</b>	<b>1 922</b>	<b>2 013</b>	<b>-2 526</b>	<b>-2 700</b>	<b>-2 975</b>	<b>-2 906</b>
Passenger	1 739	1 574	1 679	1 767	- 940	-1 138	-1 284	-1 136
Freight	230	241	243	246	-1 345	-1 342	-1 437	-1 485
Other	n.p.	n.p.	n.p.	n.p.	- 241	- 220	- 254	- 285
<b>Travel services</b>	<b>4 515</b>	<b>3 128</b>	<b>3 673</b>	<b>3 580</b>	<b>-2 648</b>	<b>-2 676</b>	<b>-3 087</b>	<b>-2 823</b>
Business	271	289	275	284	- 717	- 698	- 712	- 667
Personal	4 244	2 839	3 398	3 296	-1 931	-1 978	-2 375	-2 156
Education-related	1 755	714	1 156	578	- 172	- 125	- 204	- 159
Other	2 489	2 125	2 242	2 718	-1 759	-1 853	-2 171	-1 997
<b>Communications services</b>	<b>233</b>	<b>219</b>	<b>264</b>	<b>251</b>	<b>- 356</b>	<b>- 301</b>	<b>- 295</b>	<b>- 413</b>
<b>Construction services</b>	<b>24</b>	<b>35</b>	<b>22</b>	<b>24</b>	<b>0</b>	<b>0</b>	<b>0</b>	<b>0</b>
<b>Insurance services</b>	<b>169</b>	<b>166</b>	<b>169</b>	<b>169</b>	<b>- 214</b>	<b>- 214</b>	<b>- 214</b>	<b>- 214</b>
<b>Financial services</b>	<b>196</b>	<b>196</b>	<b>196</b>	<b>196</b>	<b>- 139</b>	<b>- 139</b>	<b>- 139</b>	<b>- 139</b>
<b>Computer and information services</b>	<b>245</b>	<b>255</b>	<b>259</b>	<b>239</b>	<b>-83</b>	<b>- 132</b>	<b>- 133</b>	<b>- 137</b>
<b>Royalties and licence fees</b>	<b>113</b>	<b>138</b>	<b>115</b>	<b>119</b>	<b>- 483</b>	<b>- 439</b>	<b>- 476</b>	<b>- 457</b>
<b>Other business services</b>	<b>776</b>	<b>851</b>	<b>813</b>	<b>957</b>	<b>- 828</b>	<b>- 958</b>	<b>-1 019</b>	<b>-1 022</b>
Merchanting and other trade-related	135	134	96	158	-76	-90	- 113	-96
Operational leasing	5	9	9	7	- 209	- 207	- 218	- 216
Miscellaneous business, professional & technical	636	708	708	792	- 543	- 661	- 688	- 710
Legal, accounting, management consulting and public relations	176	158	176	186	-84	- 124	-70	-90
Advertising, market research, and public opinion polling	38	34	24	37	-37	-57	-27	-39
Research and development	50	66	79	80	-19	-21	-38	-37
Architectural, engineering and other technical services	118	134	133	185	- 118	- 139	- 213	- 103
Agricultural, mining, and on-site processing	28	9	9	23	-46	-38	-38	-86
Services between affiliated enterprises n.i.e.	175	259	209	212	- 191	- 209	- 214	- 242
Other	51	48	78	69	-48	-73	-88	- 113
<b>Personal, cultural, and recreational services</b>	<b>152</b>	<b>165</b>	<b>149</b>	<b>142</b>	<b>- 218</b>	<b>- 250</b>	<b>- 206</b>	<b>- 226</b>
Audiovisual and related services	24	17	26	21	- 186	- 215	- 178	- 182
Other personal, cultural and recreational services	128	148	123	121	-32	-35	-28	-44
<b>Government services n.i.e.</b>	<b>189</b>	<b>219</b>	<b>187</b>	<b>183</b>	<b>- 156</b>	<b>- 190</b>	<b>- 157</b>	<b>- 168</b>

(a) For sign conventions, see paragraph 8 of the Explanatory Notes.

(b) For more information, see paragraphs 11 and 12 of the Explanatory Notes.

## PERIOD AVERAGE EXCHANGE RATES(a)

## UNITS OF FOREIGN CURRENCY PER AUSTRALIAN DOLLAR.....

<i>Period</i>	<i>United States dollar</i>	<i>United Kingdom pound</i>	<i>Euro</i>	<i>Japanese yen</i>	<i>Special Drawing Right</i>	<i>Trade-weighted index of value of the \$A(b)</i>
<b>1999-2000</b>	0.6289	0.3948	..	67.90	0.4642	55.2
<b>2000-2001</b>	0.5379	0.3704	0.6023	61.49	0.4177	50.3
<b>2001-2002</b>	0.5239	0.3632	0.5850	66.10	0.4135	50.8
<b>2001</b>						
October	0.5054	0.3482	0.5574	61.30	0.3952	48.6
November	0.5168	0.3597	0.5821	63.25	0.4075	50.0
December	0.5146	0.3573	0.5761	65.50	0.4070	50.1
<b>2002</b>						
January	0.5169	0.3600	0.5836	68.51	0.4121	50.9
February	0.5130	0.3605	0.5897	68.54	0.4122	50.7
March	0.5243	0.3685	0.5982	68.74	0.4195	51.4
April	0.5354	0.3713	0.6047	70.06	0.4263	52.3
May	0.5497	0.3765	0.6000	69.55	0.4308	52.6
June	0.5694	0.3839	0.5962	70.29	0.4383	53.4
July	0.5544	0.3564	0.5580	65.43	0.4166	51.2
August	0.5422	0.3527	0.5543	64.48	0.4106	50.5
September	0.5470	0.3517	0.5578	66.01	0.4138	51.1
October	0.5498	0.3530	0.5601	68.09	0.4173	51.7
November	0.5611	0.3570	0.5604	68.19	0.4214	52.2
December	0.5627	0.3555	0.5535	68.81	0.4211	52.1

(a) These exchange rates and the trade-weighted index are derived using rates provided by the Reserve Bank of Australia in respect of each trading day.

(b) May 1970=100. The trade-weighted index is reweighted annually (on 1 October) and on special occasions as required.



# EXPLANATORY NOTES

## INTRODUCTION

**1** This publication contains preliminary estimates of Australia's international trade in goods and services on a balance of payments basis. General merchandise imports and exports are derived mainly from international trade statistics, which are based on Australian Customs Service records. Adjustments for coverage and timing are made to international trade statistics to bring them to a balance of payments basis. The main source of services data is the quarterly Survey of International Trade in Services.

**2** More comprehensive quarterly estimates of Australia's trade in goods and services, together with comprehensive details of Australia's balance of payments and international investment position statistics are included in the quarterly publication, *Balance of Payments and International Investment Position, Australia* (cat. no. 5302.0).

## CONCEPTS, SOURCES AND METHODS

**3** The conceptual framework used in Australia's balance of payments and international investment position statistics is based on the Fifth Edition of the International Monetary Fund's *Balance of Payments Manual* (BPM5, 1993). Descriptions of the underlying concepts and structure of the balance of payments and international investment position, and the sources, methods and terms used in compiling the estimates are presented in *Balance of Payments and International Investment Position, Australia: Concepts, Sources and Methods, 1998* (cat. no. 5331.0).

## SEASONAL ADJUSTMENT

**4** Monthly original estimates are volatile, being subject to calendar related and large irregular influences. Seasonally adjusted estimates are derived by estimating and removing systematic calendar related effects, such as seasonal and trading day influences, from the original series. The trading day influences arise from the varying length of months and the varying number of Sundays, Mondays, Tuesdays etc in each month. Seasonal adjustment does not aim to remove the irregular or non-seasonal influences which may be present in any particular month. The irregular influences may reflect both random economic events and difficulties of statistical recording.

**5** The factors used to seasonally adjust the monthly goods and services statistics can be obtained from Kevin Yeadon on Canberra (02) 6252 6255. There is a charge for this service.

## TREND ESTIMATES

**6** The month-to-month movements of the seasonally adjusted estimates may not be reliable indicators of trend behaviour. For example, irregular factors unrelated to the trend account for more than half the seasonally adjusted monthly movements with the following frequency:

balance on goods and services: 9 in 10 months  
goods and services credits: 8 in 10 months  
goods and services debits: 8 in 10 months.

**7** Trend estimates are derived by applying a 13-term Henderson moving average to the seasonally adjusted series. The 13-term Henderson average (like all Henderson averages) is symmetric, but as the end of a time series is approached, asymmetric forms of the average are applied. While the asymmetric weights enable trend estimates for recent months to be produced, they result in revisions to the estimates for the most recent six months as additional observations become available. There may also be revisions because of changes in the original data and as a result of the re-estimation of the seasonal factors. Details of trend-cycle weighting patterns are available on request from Time Series Analysis Section on Canberra 02 6252 6076.

## EXPLANATORY NOTES

### SIGN CONVENTION

**8** In keeping with balance of payments conventions, credit entries are shown without sign and debit items are shown as negative entries. However, references to debit items in Key Figures, Key Points, and Analysis and Comments are made without regard to sign.

### COMMODITY BREAKDOWNS OF GOODS

**9** For details of the classification used for rural and non-rural goods see table 6.6 in *Balance of Payments and International Investment Position, Australia: Concepts, Sources and Methods, 1998* (cat. no. 5331.0).

**10** Table 6.7 in 5331.0 provides details of the classification used for goods debits. Most of the 25 commodity groups shown in table 4 for merchandise goods debits are further sub-divided into a total of 106 commodity sub-groups. The information at this level is available as a special data service, and can be obtained from Kevin Yeadon on Canberra 02 6252 6255.

### COMMODITY BREAKDOWNS OF SERVICES

**11** The quarterly detailed services data published in Table 6 are consistent with the monthly aggregates shown in Table 5. Subject to confidentiality constraints, a further breakdown of services data on a quarterly basis is available on request. Services trade data by major partner countries and by Australian state of production/consumption are published on a financial year basis and a calendar year basis in feature articles in this publication. Additional detail and additional presentations of the data are available on request. For further information contact Kevin Yeadon on Canberra 02 6252 6255.

**12** Monthly indicators for many of the services components that are surveyed only quarterly are not available. In particular, the Freight and Other transportation components of Total services credits are not available for publication on a monthly basis. Therefore the estimates for these items shown in table 5 are derived by dividing the quarterly estimate by three.

### RELATED PRODUCTS AND SERVICES

**13** Detailed data of exports and imports of goods dissected by commodity and country are available on an international trade basis by contacting the National Information and Referral Service. Contact details are shown on the back of this publication.

**14** Users may also wish to refer to the following publications which are available from ABS Bookshops:

- *Balance of Payments and International Investment Position, Australia* (cat. no. 5302.0)—issued quarterly
- *International Merchandise Trade, Australia* (cat no. 5422.0)—issued quarterly
- *Balance of Payments and International Investment Position, Australia: Concepts, Sources and Methods* (cat. no. 5331.0)
- *Information Paper: Quality of Australian Balance of Payments Statistics* (cat. no. 5342.0)
- *International Merchandise Trade, Australia: Concepts, Sources and Methods* (cat. no. 5489.0)
- *A Guide to Australian Balance of Payments and International Investment Position Statistics* (cat. no. 5362.0.55.001).

**15** The last four publications are located on the ABS web site <<http://www.abs.gov.au>>

-select [About Statistics](#) then [Concepts & Classifications](#).

# WHAT IF...? REVISIONS TO TREND ESTIMATES

## EFFECT OF NEW SEASONALLY ADJUSTED ESTIMATES ON TREND ESTIMATES

Readers should exercise care in the interpretation of the trend data as the last three observations, in particular, are likely to be revised with the addition of subsequent months' data. For further information, see Explanatory Note 7.

### TREND REVISIONS

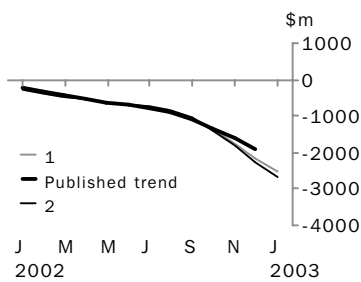
The graph below presents the effect of two possible scenarios on the previous trend estimates:

**1** The January seasonally adjusted estimate of the balance on goods and services 'improves' by \$200 million when compared with the December seasonally adjusted estimate. (An 'improvement' refers to an increase in a surplus or a decrease in a deficit.)

**2** The January seasonally adjusted estimate of the balance on goods and services 'deteriorates' by \$200 million when compared with the December seasonally adjusted estimate. (A 'deterioration' refers to a decrease in a surplus or an increase in a deficit.)

The change of \$200 million has been chosen because in the last decade the average monthly movement, without regard to sign, of the seasonally adjusted balance on goods and services series has been approximately \$200 million.

BALANCE ON GOODS AND SERVICES



	TREND AS PUBLISHED	WHAT IF NEXT MONTH'S SEASONALLY ADJUSTED ESTIMATE:	
		<b>1</b> <i>improves by \$200m on Dec 2002</i>	<b>2</b> <i>deteriorates by \$200m on Dec 2002</i>
	\$m	\$m	\$m
June 2002	- 701	- 698	- 698
July 2002	- 770	- 751	- 743
August 2002	- 890	- 858	- 845
September 2002	-1 076	-1 061	-1 054
October 2002	-1 329	-1 366	-1 384
November 2002	-1 626	-1 745	-1 804
December 2002	-1 926	-2 143	-2 255
January 2003		-2 525	-2 693

## FOR MORE INFORMATION...

- INTERNET* **www.abs.gov.au** the ABS web site is the best place to start for access to summary data from our latest publications, information about the ABS, advice about upcoming releases, our catalogue, and Australia Now—a statistical profile.
- LIBRARY* A range of ABS publications is available from public and tertiary libraries Australia-wide. Contact your nearest library to determine whether it has the ABS statistics you require, or visit our web site for a list of libraries.
- CPI INFOLINE* For current and historical Consumer Price Index data, call 1902 981 074 (call cost 77c per minute).
- DIAL-A-STATISTIC* For the latest figures for National Accounts, Balance of Payments, Labour Force, Average Weekly Earnings, Estimated Resident Population and the Consumer Price Index call 1900 986 400 (call cost 77c per minute).

## INFORMATION SERVICE

Data which have been published and can be provided within five minutes are free of charge. Our information consultants can also help you to access the full range of ABS information—ABS user-pays services can be tailored to your needs, time frame and budget. Publications may be purchased. Specialists are on hand to help you with analytical or methodological advice.

- PHONE* **1300 135 070**
- EMAIL* **client.services@abs.gov.au**
- FAX* 1300 135 211
- POST* Client Services, ABS, GPO Box 796, Sydney 2001

## WHY NOT SUBSCRIBE?

ABS subscription services provide regular, convenient and prompt deliveries of ABS publications and products as they are released. Email delivery of monthly and quarterly publications is available.

- PHONE* 1300 366 323
- EMAIL* subscriptions@abs.gov.au
- FAX* 03 9615 7848
- POST* Subscription Services, ABS, GPO Box 2796Y, Melbourne 3001



2536800012021  
ISSN 1328-2778

RRP \$19.50